

Facets 3.63.0 Enhancements and Bug Fixes - January 2008

Conspicuous Enhancements

1. Estimation iteration process. Generally 2 iterations less to convergence

Table 3. Iteration Report.

Iteration	Max. Score Elements	Residual % Categories	Max. Logit Elements	Change Steps
JPROX 1			.7405	1
JMLE 2	21.0444	17.5	24.7419	-.2372 .9613
JMLE 3	8.9211	5.3	13.3946	-.0621 .9371
JMLE 4	-2.9168	-2.4	2.7096	-.0401 .2115
JMLE 5	-2.4030	-2.0	1.3453	-.0343 .0749
JMLE 6	-1.8188	-1.5	1.0204	-.0256 .0413
JMLE 7	-1.5077	-1.1	.8226	-.0205 -.0345
JMLE 8	-1.2081	-.9	.6759	.0168 -.0298
JMLE 9	-1.0887	-.7	.5603	.0139 -.0251
JMLE 10	-.9030	-.6	.4666	.0116 -.0210
JMLE 11	-.7488	-.5	.3896	.0097 -.0176
JMLE 12	-.6216	-.4	.3264	.0081 -.0147
JMLE 13	-.5169	-.3	.2737	.0068 -.0124
JMLE 14	-.4306	-.3	.2298	.0057 -.0104
JMLE 15	-.3593	-.2	.1931	.0048 -.0087

Facets 3.62.0

Table 3. Iteration Report.

Iteration	Max. Score Elements	Residual % Categories	Max. Logit Elements	Change Steps
JPROX 1			.7405	1
JMLE 2	21.0444	17.5	24.7419	-.2372 2.2989
JMLE 3	4.1066	-3.4	-.7658	-.0648 -.0930
JMLE 4	-1.4643	-1.2	.8815	-.0244 -.0517
JMLE 5	-1.2319	-1.0	.3762	-.0198 -.0214
JMLE 6	-.8471	-.7	.3664	-.0134 -.0218
JMLE 7	-.6849	-.5	.2855	-.0102 -.0171
JMLE 8	-.5835	-.4	.2359	.0081 -.0142
JMLE 9	-.4905	-.3	.1932	.0067 -.0117
JMLE 10	-.4082	-.3	.1592	.0055 -.0096

Facets 3.63.0

2. Input data from SAS, SPSS and STATA files, as well as Excel files.

```
Data= Creativity.sav ; SPSS file with 1-5
; or
; Data= Creativity.xls ; Excel file with 1-5
; or
; dvalues = 3, 1-5
; data = Guilford.sav ; SPSS file omitting 1-5 for the 3rd facet
; or
; dvalues = 3, 1-5
; data = Guilford.xls ; Excel file omitting 1-5 for the 3rd facet
```

3. ASCII=Y or N or W controls output table print format

Table format: ASCII= No+ Yes+ Webpage+ ASCII Help

Webpage fonts:

ASCII = Yes outputs Tables with standard ASCII codes.

ASCII = Webpage outputs Tables in HTML format.

ASCII = No output Tables in PC-CHAR format.

Can also be made the default in **Edit Initial Settings**

ASCII = Y: Table 6.0 displayed with font: *Courier New Bold*

Mear	Senior scientists	Junior Scientists	CREAT
1		Betty	(9)
		Edward	6
		George	5
0	Brahe	Anne	5
	Avogadro Cavendish		4
		Chris David Fred	4
-1			(1)

ASCII = Y: Table 6.0 displayed with font: *Courier New Bold*

ASCII=W: Table 6.0 displayed with font: *Andale Mono Bold* (installed with Facets)

Mear	Senior scientists	Junior Scientists	CREAT
1		Betty	(9)
		Edward	6
		George	5
0	Brahe	Anne	5
	Avogadro Cavendish		4
		Chris David Fred	4
-1			(1)

ASCII=W: Table 6.0 displayed with font: *Andale Mono Bold* (installed with Facets)

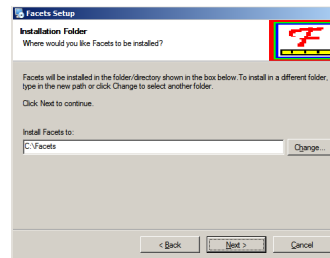
ASCII=N: Table 6.0 displayed with font: *Letter Gothic Line Bold* (installed with Facets)

Mear	Senior scientists	Junior Scientists	CREAT
1		Betty	(9)
		Edward	6
		George	5
0	Brahe	Anne	5
	Avogadro Cavendish		4
		Chris David Fred	4
-1			(1)

ASCII=N: Table 6.0 displayed with font: *Letter Gothic Line Bold* (installed with Facets)

Vista-compatibility

4. Enhancement: Vista-compatible installation procedure: requests *administrator mode*.



5. Vista-compatible Help display: *facets.chm*

Output Table Enhancements

6. Enhancement: Summary statistics.
Table 5. Two decimal places (instead one decimal).
 Reporting a global chi-square and a table of the observations.

Table 5. Measurable Data Summary.

Cat	Step	Exp. Resd	StRes	Nu	Ch	Nu	Activity
1	26	1.26	1.26	.00	.06		Mean (Count: 1850)
7	7	.77	.55	.54	1.03		S.D. (Populn)
7	7	.77	.55	.54	1.03		S.D. (Sample)

Count of measurable responses = 1850
 Data log-likelihood chi-square= 2658.0883
 Data root-mean-square-error= .5422

	Count	Mean	S.D.
Responses used for estimation	= 1850	1.26	0.77
Responses in one extreme score	= 25	2.00	0.00
All Responses	= 1875	1.27	0.77

7. **Table 6: bug fix.**
 Vertical = (1A,2A,3A,S)
 displayed incorrectly as
 Vertical =
 (1A,2A,3A,1A,2A,3A,S)

Specification Enhancements

8. **“D” for dummy facet in Labels=**

2=Gender, D ; means the same as:
 1=Female
 2=Male
 *

2=Gender, A
 1=Female,0
 2=Male,0
 *

9. **Point-biserial = Yes**
 now reports the point-biserial, same as Pt-biserial=Yes

	Estim.	d Discrm	PtBis	Nu	Childre
9	-.95	.42	.42	2	Boy
8	-.92	.42	.42	24	Girl
4	-.04	.43	.43	27	Girl
7	.56	.57	.57	33	Girl
8	.51	.53	.53	14	Boy

10. **Scorefile=**
 to working folder by default

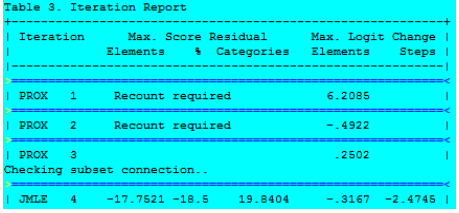
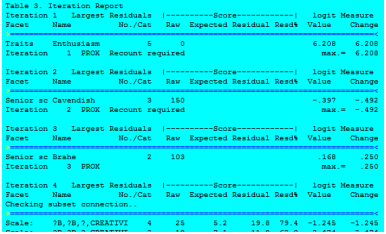
Writing score file for facet 1 to C:\Facets\examples\essayss1.txt
 Writing score file for facet 2 to C:\Facets\examples\essayss2.txt
 Writing score file for facet 3 to C:\Facets\examples\essayss3.txt
 Writing score file for facet 4 to C:\Facets\examples\essayss4.txt
 Writing graph output file

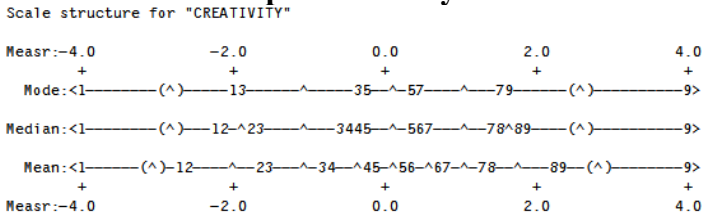
11. **Tables = Yes** - All Tables automatically produced and displayed after main analysis.
Tables = No - Only Tables 1,2,3,5 automatically produced and displayed after main analysis.

12. **T3onscreen = Yes**
 shows the one-line iteration report during

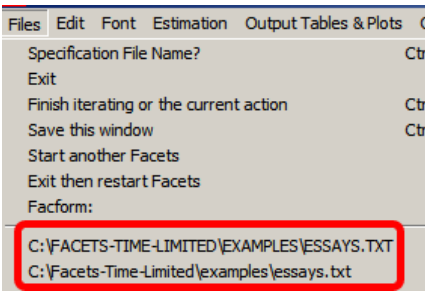
T3onscreen = Yes

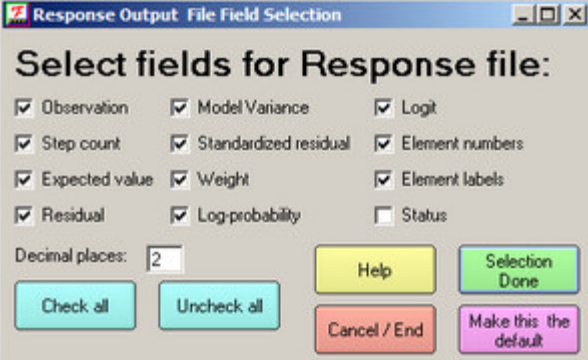
T3onscreen = No

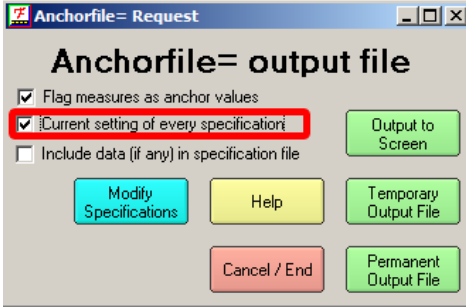
<p>estimation.</p> <p>T3onscreen = No shows the detailed element-level report</p>		
--	--	---

<p>13. T8NBC = NBC controls display of Numbers, Barcharts, Curves for Table 8 output</p>	<p style="text-align: center;">T8NBC = B produces only bar-charts.</p> <p style="text-align: center;">Scale structure for "CREATIVITY"</p> 
--	--

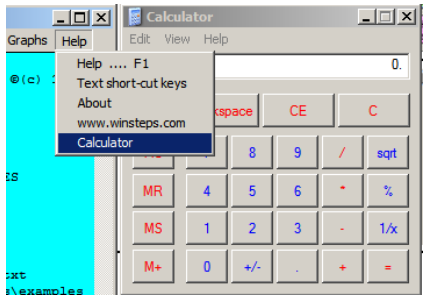
Operational Improvements

<p>14. Remove duplicate files in "Most Recently Used" list</p>	
---	---

<p>15. Residuals-file field selection from <i>Output Files</i> menu</p>	
--	--

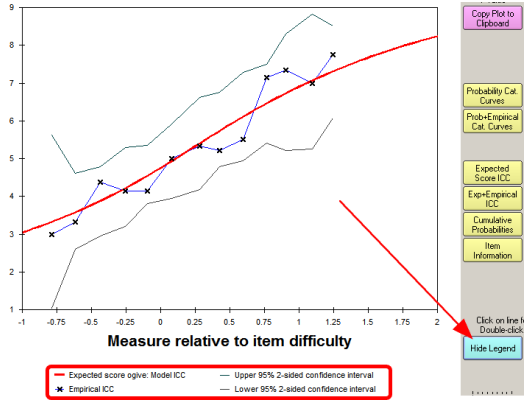
<p>16. Anchor-file option to include all specifications from <i>Output Files</i> menu</p>	
--	--

17. Windows Calculator from Help menu



Graphing Enhancements

18. Enhancement: Graphs: display or hide the Legends identifying the lines.



19. Empirical category frequency display bug fix

